

When **QUALITY,**  
**SERVICE** and **PRICE**  
**MATTER MOST!**



BROCHURE

# COMMERCIAL & RESIDENTIAL

CONSTRUCTION | HVAC | IRRIGATION



VISIT US ONLINE TODAY AT  
[NCICanada.com](http://NCICanada.com)



## About NCI Canada Inc.

Headquartered in the greater Toronto area, NCI Canada Inc. is an innovative, privately owned company that specializes in the development, manufacturing and distribution of high quality pipe, valves and fittings. With over 20 years of industry experience, NCI Canada is recognized as one of Canada's leading master distributors of pipe, valves and fittings, and are proud to service wholesale, retail and OEM customers.

All NCI Canada pipe, valves and fittings are sold and supported through its network of authorized distributors and warehouses across Canada. NCI Canada stocks over 25,000 products within 150,000 sq feet of warehouse area in both central and western Canada.

With a large selection of pipe, valves and fittings products, NCI Canada services the commercial

construction, fire protection, HVAC, irrigation, pulp & paper, mining, water & wastewater, oil & gas, and power generation industries.

Our success in the pipe, valves, and fittings industry is attributed primarily to our customer-centric team of sales personnel, service engineers and trained service staff that are collectively committed to providing quality products at a service and price you will come to love.

Contact NCI Canada today and discover the many ways we can help you and your organization with your pipe, valves and fittings needs.

**Learn more at [www.NCICanada.com](http://www.NCICanada.com)**



## Metal Valves

### Ball Valves

Brass.....	4
Bronze.....	5
Carbon/Stainless Steel .....	6

### Butterfly Valves

Iron.....	8
Carbon/Stainless Steel .....	8

### Gate Valves

Bronze.....	9
Iron.....	10
Carbon/Stainless Steel .....	11

### Globe Valves

Bronze.....	12
Iron.....	12
Carbon/Stainless Steel .....	13

### Check Valves

Bronze.....	14
Iron.....	14
Carbon/Stainless Steel .....	15



## Metal Strainers

### Strainers

Bronze.....	16
Iron.....	16
Carbon/Stainless Steel .....	16

## Metal Fittings

### Press System

Copper & Copper Alloy Press System....	18
--	----

### Copper Fittings

High Pressure Copper Fittings.....	22
------------------------------------	----

### Bronze Fittings

Bronze Fittings .....	24
-----------------------	----

### Nipples & Weld Outlets

Brass & Steel Nipples .....	26
Weld Outlets.....	26



## Plastic PVF

### ABS DWV Fittings

ABS DWV Fittings .....	27
------------------------	----

### CPVC-CTS Piping System

CPVC-CTS Piping System .....	31
------------------------------	----

### PVC Fittings

Schedule 40 Fittings.....	34
Schedule 80 Fittings.....	38

## Other

### Flexible Fittings

Flexible Pipe & Hose Connectors.....	41
--------------------------------------	----

### Pipe Insulation

Pipe Insulation .....	42
-----------------------	----



### BRASS BALL VALVES

#### NCI 2-Piece Lead Free Brass Ball Valve

600FP-T/S-LF

- 1/4"-4": 600 CWP
- Threaded (NPT) or soldered



#### NCI 2-Piece Brass Ball Valve

600FP-T/S

- 1/4"-2": 600 CWP
- 2 1/2"-4": 400 CWP
- Threaded (NPT) or soldered



#### NCI 2-Piece Brass Ball Valve

(T/S)FP601-(SS)

- 1/4"-2": 600 CWP
- Threaded (NPT) or soldered
- Stainless steel trim available



#### NCI 2-Piece Brass Ball Valve with Side Drain and Wing Handle

(T/S)FP600-SDWH

- 1/2"-1": 600 PSI non-shock CWP
- Threaded (NPT) or soldered



#### NCI 2-Piece Brass Ball Valve with Side Drain

600FP-T/S-SD

- 1/2"-1": 600 PSI Non-Shock CWP
- Threaded (NPT) or Soldered



### BRASS GAS BALL VALVES



#### NCI Brass Gas Ball Valve

GBV31T

- 3/8"-1/2"
- FNPT x FLARE



#### NCI Brass Gas Ball Valve

GBV32T

- 3/8"-1/2"
- MNPT x FLARE



#### NCI Brass Gas Ball Valve

GBV33T

- 1/2" x 5/8"
- FLARE x FLARE



#### NCI Brass Gas Ball Valve

GBV11T

- 3/8"-1"
- FNPT x FNPT



#### NCI Brass Gas Ball Valve

GBQ11L

- 1/8"-1/4"
- FNPT x FNPT



#### NCI Brass Gas Ball Valve

GBQ12L

- 1/8"-1/4"
- MPT x FPT

BRONZE BALL VALVES

**NIBCO 2-Piece Bronze Ball Valve**

KT-585-70-UL  
KT-580-70-UL

- ¼"–1": 300 PSI, full port
- 1¼"–2": 300 PSI, standard port
- Threaded (NPT)



**NIBCO 2-Piece Bronze Ball Valve**

KT-585-70-UL  
KT-580-70-UL

- ¼"–1": 300 PSI, full port
- 1¼"–2": 300 PSI, standard port
- Threaded (NPT)



**NIBCO 3-Piece Bronze Ball Valve**

G590-Y/G-590-Y-66

- 1½"–2½": 600 CWP
- Grooved



**NIBCO 3-Piece Bronze LP Gas Ball Valve**

T/S-590-Y/T

- ¼"–2": 600 CWP
- Threaded (NPT)



**NIBCO 3-Piece Bronze Ball Valve**

T/S-590-Y/T  
S-590-Y-66

- ¼"–3": 600 CWP
- Threaded (NPT) or soldered



**NIBCO 2-Piece Bronze Ball Valve**

T/S-FP620-HC

- ½"–¾": 600 CWP
- Threaded (NPT) or soldered



**NIBCO 3-Way Bronze Ball Valve**

T/S-FP620-W3

- ½"–2": 600 CWP
- Threaded (NPT) or soldered



**NCI 2-Piece Lead Free Bronze Ball Valve**

(T/S)FP620-LF-(SS)

- ¼"–2": 600 CWP
- Threaded (NPT) or soldered

LEAD FREE **CRN**



**NCI 2-Piece Bronze Ball Valve**

(T/S)FP620

- ¼"–2": 600 CWP
- Threaded (NPT) or soldered
- Stainless steel trim available

**CRN**



**NCI 3-Piece Bronze Ball Valve**

(T/S)FP600-LF

- ¼"–2": 600 CWP
- Threaded (NPT) or soldered

**CRN**



**NCI 2-Piece Bronze Ball Valve**

(T/S)FP600-HC

- ½"–¾": 600 PSI Non-Shock CWP
- Threaded (NPT) or Soldered



### CARBON STEEL BALL VALVES



**Flow+**  
**1-Piece Carbon Steel Ball Valve**  
**B06**  
 • ¼"–2": 2000 PSI  
 • Threaded (NPT)



**Flow+**  
**2-Piece Carbon Steel Ball Valve**  
**ZF1**  
 • ½"–8": Class 150, flanged  
 • WCB or LCC body, full port  
 • ISO mounting pad



**Flow+**  
**2-Piece Carbon Steel Ball Valve**  
**ZR1**  
 • 2"–8": Class 150, flanged  
 • WCB or LCC body, regular port  
 • ISO mounting pad



**Flow+**  
**2-Piece Carbon Steel Ball Valve**  
**B11**  
 • ¼"–2": 2000 PSI,  
 3": 1500 PSI  
 • Threaded (NPT)



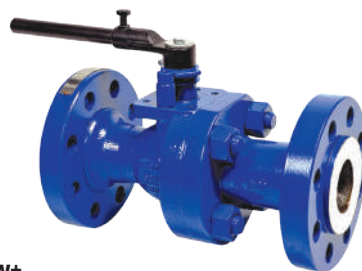
**Flow+**  
**2-Piece Carbon Steel Ball Valve**  
**ZF3**  
 • 2"–8": Class 300, flanged  
 • WCB or LCC body, full port  
 • ISO mounting pad



**Flow+**  
**2-Piece Carbon Steel Ball Valve**  
**ZR3**  
 • 2"–6": Class 300  
 • WCB or LCC body, regular port  
 • ISO mounting pad



**Flow+**  
**2-Piece Carbon Steel Ball Valve**  
**BT3/6**  
 • ½"–2": 3000 PSI, 6000 PSI  
 • Threaded (NPT) or socket weld



**Flow+**  
**2-Piece Carbon Steel Ball Valve**  
**ZF6**  
 • 2"–8": Class 600, flanged  
 • WCB or LCC body, full port  
 • ISO mounting pad



**Flow+**  
**2-Piece Carbon Steel Ball Valve**  
**ZR6**  
 • 2"–6": Class 600, flanged  
 • WCB or LCC body, regular port  
 • ISO mounting pad



STAINLESS STEEL BALL VALVES

**Flow+ 2-Piece Stainless Steel Ball Valve**

- B01**
- ¼"–2½": 1000 PSI
  - Threaded (NPT) or soldered



**Flow+ 2-Piece Stainless Steel Ball Valve**

- B02**
- ¼"–2": 2000 PSI, 3": 1500 PSI
  - Threaded (NPT) or soldered
  - Actuator mounting pad



**Flow+ 2-Piece Stainless Steel Ball Valve**

- B03**
- ½"–2": 1000 PSI
  - Threaded (NPT) or soldered
  - ISO direct mount



**Flow+ 3-Piece Stainless Steel Ball Valve**

- B04(S)**
- ¼"–4": 1000 PSI
  - Threaded (NPT) or soldered
  - ISO direct mount



**Flow+ 3-Piece Stainless Steel Ball Valve**

- B05(S)**
- ½"–4": 1000 PSI
  - Threaded (NPT) or soldered
  - ISO direct mount



**Flow+ 3-Piece Stainless Steel Ball Valve**

- B05TC**
- ½"–4": 1000 PSI
  - Tri-Clamp
  - ISO direct mount



**Flow+ 3-Piece Stainless Steel Ball Valve**

- B05TO**
- ½"–4": 1000 PSI
  - Tube ends
  - ISO direct mount



**Flow+ 3-Way Stainless Steel Ball Valve**

- B07L/T**
- ½"–2": 1000 PSI
  - Threaded (NPT)
  - ISO direct mount



**Flow+ 3-Way Stainless Steel Ball Valve**

- B07L/T**
- 1"–4": Class 150
  - Flanged
  - L or T-Port, ISO mounting pad



**Flow+ 2-Piece Stainless Steel Ball Valve**

- ZF1**
- ½"–8": Class 150
  - Flanged
  - ISO mounting pad



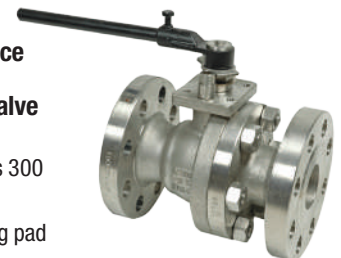
**Flow+ 3-Way Stainless Steel Ball Valve**

- ZF1**
- ½"–6": Class 150
  - Flanged
  - ISO direct mount



**Flow+ 2-Piece Stainless Steel Ball Valve**

- ZF3**
- 2"–8": Class 300
  - Flanged
  - ISO mounting pad



### RESILIENT SEATED BUTTERFLY VALVES

#### NCI Commercial C.I. Butterfly Valve

##### BFL & BFW Series

- 2"–24": 200 PSI CWP
- Lug and wafer styles
- Lever or gear operated
- EPDM seat
- Stainless steel disc

**CRN**



#### Flow+ Commercial D.I. Butterfly Valves

##### BFL & BFW Series

- 2"–12": 200 PSI CWP
- Lug and wafer styles
- Lever or gear operated
- EPDM, BUNA, Viton, or PTFE seats
- Optional NSF certified seat
- Stainless steel disc

**CRN**



#### NIBCO D.I. Lug Style Butterfly Valve

##### LD-1000

- 14"–48": 150 PSI CWP
- Lever or gear operated
- Molded-In seat liner
- D.I., S.S. or bronze disc



#### NIBCO C.I. Wafer/Lug Style Butterfly Valve

##### WD-2000 / LD-2000

- 2"–12": 200 PSI CWP
- Lever or gear operated
- Molded-In seat liner
- Aluminum bronze disc



#### NIBCO D.I. Wafer/Lug Style Butterfly Valve

##### WD-2000 / LD-2000

- 2"–12": 200 PSI CWP
- Lever or gear operated
- Molded-In seat liner
- Aluminum bronze disc



#### NIBCO D.I. Wafer/Lug Style Butterfly Valve

##### WD-3000 / LD-3000

- 2"–12": 250 PSI CWP
- Lever or gear operated
- Molded-In seat liner
- Aluminum bronze disc

### HIGH PERFORMANCE BUTTERFLY VALVES

#### Flow+ High Performance Butterfly Valves

##### HPL Series

- 2"–12": 285/275 PSI CWP
- Lug and wafer styles
- Lever or gear operated
- RTFE seat
- Stainless steel disc



#### NIBCO D.I. Lug Style Butterfly Valve

##### LD-2000

- 14"–24": 200 PSI CWP
- Lever or gear operated
- Molded-In seat liner
- D.I., S.S or bronze disc



#### NIBCO D.I. Wafer/Lug Style Butterfly Valve

##### WD-5022 / LD-5022

- 2"–12": 285 PSI CWP
- Lever or gear operated
- Molded-In seat liner
- Stainless steel disc



BRONZE GATE VALVES



**NCI Class 150  
Bronze Gate Valve**  
**GTVA-(T/S)BZ2333**

- ¼"–3":  
300 PSI CWP
- Threaded (NPT)  
or soldered
- Rising stem
- Screwed-in bonnet

**CRN**



**NCI Class 150  
Bronze Gate Valve**  
**GTVA-(T/S)BZ2333U**

- 3/8"–2":  
300 PSI CWP
- Threaded (NPT)  
or soldered
- Rising stem
- Union bonnet

**CRN**



**NIBCO Class 125  
Bronze Gate Valve**  
**T/S-111**

- ¼"–3": 200 PSI CWP
- Threaded (NPT)  
or soldered
- Rising stem
- Screwed-in bonnet



**NIBCO Class 150  
Bronze Gate Valve**  
**T-131**

- ¼"–3": 300 PSI CWP
- Threaded (NPT)
- Rising stem
- Screwed-in bonnet



**NCI Class 150  
Bronze Gate Valve**  
**GTVB-(T/S)BZ2333**

- ¼"–3":  
300 PSI CWP
- Threaded (NPT)  
or soldered
- Non-rising stem
- Union bonnet

**CRN**



**NCI Class 300  
Bronze Gate Valve**  
**GTVA-TBZ3333U**

- ¼"–2": 1000 PSI CWP
- Threaded (NPT)  
or soldered
- Rising stem
- Union bonnet

**CRN**



**NIBCO Class 150  
Bronze Gate Valve**  
**T/S-136**

- ¼"–3": 300 PSI CWP
- Threaded (NPT)  
or soldered
- Non-Rising stem
- Union bonnet



**NCI Class 300  
Bronze Gate Valve**  
**GTVB-TBZ3333U**

- ¼"–2": 1000 PSI CWP
- Threaded (NPT)  
or soldered
- Rising stem
- Union bonnet

**CRN**



**NIBCO Class 125  
Bronze Gate Valve**  
**T/S-113**

- ¼"–3": 200 PSI CWP
- Threaded (NPT)  
or soldered
- Non-rising stem
- Screwed-in bonnet



**NIBCO Class 150  
Bronze Gate Valve**  
**T-133**

- ¼"–3": 300 PSI CWP
- Threaded (NPT)
- Non-rising stem
- Screwed-in bonnet

### BRONZE GATE VALVES



**NIBCO Class 150 Bronze Gate Valve**  
T/S-134

- ¼"–3": 300 PSI CWP
- Threaded (NPT) or soldered
- Rising stem
- Union bonnet



**NIBCO Class 200 Bronze Gate Valve**  
T-154-A

- ¼"–2": 400 PSI CWP
- Threaded (NPT)
- Rising stem
- Union bonnet



**NIBCO Class 300 Bronze Gate Valve**  
T-174-SS

- ¼"–2": 600 PSI CWP
- Threaded (NPT)
- Rising stem
- Union bonnet



**NIBCO Class 300 Bronze Gate Valve**  
T-176-SS

- ½"–2": 600 PSI CWP
- Threaded (NPT)
- Non-Rising stem
- Union bonnet

### IRON GATE VALVES



**NCI Class 125 Cast Iron Gate Valve**  
GTVA-FCI1333-HW

- 2½"–12": 200 PSI CWP
- 14"–24": 150 PSI CWP
- FF. Flanged
- Bronze trim
- Outside screw & yoke
- Bolted bonnet

**CRN**



**NCI Class 125 Cast Iron Gate Valve**  
GTVB-FCI1333-HW

- 2½"–12": 200 PSI CWP
- 14"–24": 150 PSI CWP
- FF. Flanged
- Bronze trim
- Non-rising stem
- Bolted bonnet

**CRN**



**NCI Class 125 Cast Iron Gate Valve**  
F/M-609

- 4"–12": 175 PSI CWP
- Flanged or mechanical
- Non-rising stem
- Bolted bonnet
- Indicator post pattern



**NIBCO Class 125 Cast Iron Gate Valve**  
F-617-0

- 2"–12": 200 PSI CWP
- Flanged
- Outside screw & yoke
- Bolted bonnet



**NIBCO Class 150 Ductile Iron Gate Valve**  
F-637-31/33

- 2"–12": 285 PSI CWP
- Flanged
- Outside screw & yoke
- Bolted bonnet



**NIBCO Class 125 Cast Iron Gate Valve**  
F-619

- 2"–16": 200 PSI CWP
- Flanged
- Non-rising stem
- Bolted bonnet



**NIBCO Class 150 Ductile Iron Gate Valve**  
F-639-31/33

- 2"–16": 285 PSI CWP
- Flanged
- Non-rising stem
- Bolted bonnet

## CARBON &amp; STAINLESS STEEL GATE VALVES



**NCI Class 150  
Cast Carbon & Stainless  
Steel Gate Valve**

**GF01RF**

- 2"–24"
- ANSI class 150#
- WCB, LCC or CF8M body
- 150# RF. Flanges
- API trim options



**NCI Class 300  
Cast Carbon & Stainless  
Steel Gate Valve**

**GF03RF**

- 2"–24"
- ANSI class 300#
- WCB, LCC or CF8M body
- 150# RF. Flanges
- API trim options



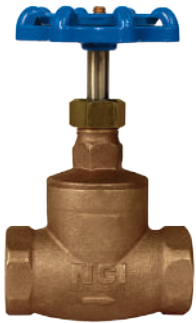
**NCI Class 800  
Forged Carbon &  
Stainless Steel Gate Valve**

**GS08TD(SW)**

- ½"–2"
- ANSI class 800#
- A105N, LF2 or 316L body
- Threaded (NPT) or socket weld ends
- API trim options



### BRONZE GLOBE VALVES

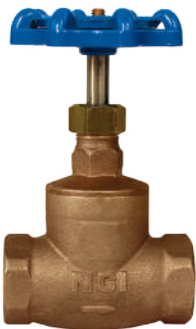


**NCI Class 150  
Bronze Globe Valve**

**GLBA-(T/S)BZ2360**

- 1/4"–3": 300 PSI CWP
- Threaded (NPT) or soldered
- PTFE disc
- Soft seat
- Screwed-in bonnet

**CRN**



**NCI Class 150  
Bronze Globe Valve**

**GLBA-(T/S)BZ2330**

- 1/4"–3": 300 PSI CWP
- Threaded (NPT) or soldered
- Metal disc
- Integral seat
- Screwed-in bonnet

**CRN**



**NCI Class 300  
Bronze Globe Valve**

**GLBA-TBZ3443U**

- 3/8"–2": 1000 PSI CWP
- Threaded (NPT)
- Stainless steel disc and seat ring
- Union bonnet

**CRN**



**NCI Class 300  
Bronze Globe Valve**

**GLBA-TBZ3443U**

- 1/2"–2": 1000 PSI CWP
- Threaded (NPT)
- Metal disc
- Integral seat
- Union bonnet

**CRN**



**NIBCO Class 125  
Bronze Globe Valve**

**T/S-211-B/Y**

- 1/8"–3": 200 PSI CWP
- Threaded (NPT) or soldered
- Metal or PTFE disc
- Soft seat
- Screwed-in bonnet



**NIBCO Class 150  
Bronze Globe Valve**

**T/S-235-Y**

- 1/8"–3": 300 PSI CWP
- Threaded (NPT) or soldered
- Renewable seat disc
- Integral seat
- Union bonnet



**NIBCO Class 300  
Bronze Globe Valve**

**T-275-BY / T-276-AP**

- 1/4"–3": 600 PSI CWP
- Threaded (NPT)
- Metal or PTFE disc / full plug disc
- Integral seat / replaceable seat
- Union bonnet



**NIBCO Class 125  
Bronze Angle Valve**

**T/S-311-Y**

- 1/4"–3": 200 PSI CWP
- Threaded (NPT) or soldered
- Renewable seat disc
- Integral seat
- Screwed-in bonnet



**NIBCO Class 150  
Bronze Angle Valve**

**T-335-Y**

- 1/8"–3": 300 PSI CWP
- Threaded (NPT)
- Renewable seat disc
- Integral seat
- Union bonnet

### IRON GLOBE VALVES



**NCI Class 125 Cast Iron Globe Valve**

**GLBA-FCI1333-HW**

- 2 1/2"–12": 200 PSI CWP
- 14"–24": 150 PSI CWP
- FF. Flanged
- Bronze trim
- Bolted bonnet

**CRN**



**NIBCO Class 150 Ductile Iron  
Globe Valve**

**F-738-31**

- 2"–10": 285 PSI CWP
- Flanged
- Bronze trim
- Outside screw & yoke
- Bolted bonnet



**NIBCO Class 250 Cast Iron  
Globe Valve**

**F-768-B**

- 2"–8": 500 PSI CWP
- Flanged
- Bronze mounted
- Renewable seat & disc
- Bolted bonnet

IRON GLOBE VALVES



**NIBCO Class 125  
Cast Iron Angle Valve**  
F-818-B

- 2"–8": 200 PSI CWP
- Flanged
- Bronze mounted
- Renewable seat & disc
- Bolted bonnet



**NIBCO Class 150  
Ductile Iron Angle Valve**  
F-838-31

- 2"–8": 285 PSI CWP
- RF. Flanged
- Bronze trim
- Outside screw & yoke
- Bolted bonnet



**NIBCO Class 250  
Cast Iron Angle Valve**  
F-869-B

- 2½"–8": 500 PSI CWP
- Flanged
- Bronze mounted
- Renewable seat & disc
- Bolted bonnet

CARBON & STAINLESS STEEL GLOBE VALVES



**NCI Class 150  
Cast Carbon & Stainless  
Steel Globe Valve**

SL01RF

- 2"–16"
- ANSI class 150#
- WCB, LCC or CF8M body
- 150# RF. Flanges
- API trim options



**NCI Class 300  
Cast Carbon & Stainless  
Steel Globe Valve**

SL03RF

- 2"–16"
- ANSI class 300#
- WCB, LCC or CF8M body
- 150# RF. Flanges
- API trim options



**NCI Class 800  
Forged Carbon & Stainless  
Steel Globe Valve**

SH08TD(SW)

- ½"–2"
- ANSI class 800#
- A105N, LF2 or 316L body
- Threaded (NPT) or socket weld ends
- API trim options

### BRONZE CHECK VALVES

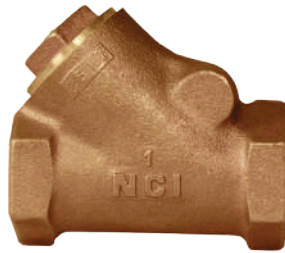


**NCI Class 150 Bronze Swing Check Valve**

**CKVA-(T/S)BZ2331**

- ¼"–3": 300 PSI CWP
- Threaded (NPT) or soldered
- Metal disc and integral seat
- Y-Pattern design

**CRN**



**NCI Class 150 Bronze Swing Check Valve**

**CKVA-(T/S)BZ2361**

- ¼"–3": 300 PSI CWP
- Threaded (NPT) or soldered
- PTFE disc and integral seat
- Y-Pattern design

**CRN**



**NCI Class 300 Bronze Swing Check Valve**

**CKVA-TBZ3330**

- ¼"–2": 1000 PSI CWP
- Threaded (NPT)
- Metal disc and integral seat
- Y-Pattern design

**CRN**



**NCI Class 150 Bronze In-Line Lift Check Valve**

**CKVB-TBZ2373/2363**

- ½"–2": 300 PSI CWP
- Threaded (NPT)
- NBR/PTFE disc ring
- Integral seat

**CRN**



**NIBCO Class 125 Bronze Swing Check Valve**

**T/S-413-B/Y/W/V**

- ¼"–2": 200 PSI CWP
- Threaded (NPT) or soldered
- PTFE, metal, or buna-n disc
- Renewable seat
- Y-Pattern design



**NIBCO Class 150 Bronze Swing Check Valve**

**T/S-433-B/Y**

- ¼"–3": 300 PSI CWP
- Threaded (NPT) or soldered
- Metal or PTFE disc
- Re grindable seat
- Y-Pattern design



**NIBCO Class 300 Bronze Swing Check Valve**

**T/S-473-B/Y**

- ¼"–2": 600 PSI CWP
- Threaded (NPT) or soldered
- Metal or PTFE disc
- Re grindable seat
- Y-Pattern design



**NIBCO Class 150 Bronze In-Line Lift Check Valve**

**T/S-433-B/Y**

- 3/8"–2": 250 PSI CWP
- Threaded (NPT) or soldered
- Metal or PTFE disc
- Integral seat
- Spring actuated

### IRON CHECK VALVES



**NCI Class 125 D.I. Swing Check Valve**

**CKVA-FC11330**

- 2½"–12": 200 PSI CWP
- 14"–24": 150 PSI CWP
- FF. Flanged
- Bronze trim, bolted bonnet

**CRN**



**NIBCO Class 125 D.I. Swing Check Valve**

**F-968-B**

- 2½"–6": 500 PSI CWP
- Flanged
- Renewable BRZ seat & disc
- Bolted bonnet



**NIBCO Class 125 D.I. Swing Check Valve**

**F/T-918-B/N**

- 2"–12": 200 PSI CWP
- Flanged or threaded
- Bronze or cast iron disc
- Bolted bonnet



**NIBCO Class 150 D.I. Swing Check Valve**

**F-938-31/33**

- 2"–12": 500 PSI CWP
- RF. Flanged
- BRZ/S.S. trim, bolted bonnet
- NSF/ANSI 61/372



CARBON & STAINLESS STEEL CHECK VALVES



**NCI Class 150  
Cast Carbon & Stainless  
Steel Swing Check Valve**

**CS01RF**

- 2"–24"
- ANSI class 150#
- WCB, LCC or CF8M body
- 150# RF. Flanges
- API trim options

**CRN**



**NCI Class 300  
Cast Carbon & Stainless  
Steel Swing Check Valve**

**CS03RF**

- 2"–24"
- ANSI class 150#
- WCB, LCC or CF8M body
- 150# RF. Flanges
- API trim options

**CRN**



**NCI Class 800  
Forged Carbon & Stainless  
Steel Swing Check Valve**

**CS08TD(SW)**

- ½"–2"
- ANSI class 800#
- A105N, LF2 or 316L body
- Threaded (NPT) or socket weld ends
- API trim options

**CRN**



**NCI Class 800  
Forged Carbon & Stainless  
Steel Lift Check Valve**

**CP08TD(SW)**

- ½"–2"
- ANSI class 800#
- A105N, LF2 or 316L body
- Threaded (NPT) or socket weld ends
- API trim options

**CRN**

### BRONZE STRAINERS

#### SSI Class 125 Bronze Y-Strainer

##### 125Y Series

- 3/8"–3": 200 PSIG
- NPT/soldered ends
- Threaded cover

**CRN**



#### SSI Class 150 Bronze Y-Strainer

##### 150Y Series

- 1/2"–12": 225 PSIG
- FF flanged
- Bolted cover

**CRN**



#### SSI Class 250 Bronze Y-Strainer

##### 250Y Series

- 1/4"–3": 400 PSIG
- NPT ends
- Threaded cover

**CRN**



#### SSI Class 150 Bronze Basket Strainer

##### 150B Series

- 2"–12": 285 PSIG
- RF/FF flanged connection
- Flanged cover

**CRN**



### CAST IRON STRAINERS

#### SSI Class 125 Cast Iron Y-Strainer

##### 125Y Series

- 2"–16": 200 PSIG
- RF flanged
- Bolted cover

**CRN**



#### SSI Class 250 Cast Iron Y-Strainer

##### 250Y Series

- 2"–12": 500 PSIG
- RF flanged
- Bolted cover

**CRN**



#### SSI Class 250 Cast Iron Y-Strainer

##### 250Y Series

- 1/4"–3": 500 PSIG
- NPT ends
- Threaded cover

**CRN**



#### SSI Class 125 Cast Iron Basket Strainer

##### 125B Series

- 2"–16": 200 PSIG
- RF/FF flanged connection
- Flanged cover

**CRN**



### CARBON STEEL STRAINERS

#### SSI Class 150 Carbon Steel Y-Strainer

##### 150Y Series

- 1/2"–12": 285 PSIG
- RF flanged
- Bolted cover

**CRN**



#### SSI Class 300 Carbon Steel Y-Strainer

##### 300Y Series

- 1/2"–12": 740 PSIG
- RF flanged, NPT or socket weld
- Bolted cover

**CRN**



#### SSI Class 600 Carbon Steel Y-Strainer

##### 600Y Series

- 1/2"–12": 1480 PSIG
- RF flanged, NPT or socket weld
- Bolted cover

**CRN**



**CARBON STEEL STRAINERS**

**SSI Class 1500 Carbon Steel Y-Strainer**

**300Y Series**

- ½"–6": 3705 PSIG
- RF flanged, NPT or socket weld
- Bolted cover

**CRN**



**SSI Class 150 Carbon Steel Basket Strainer**

**150B Series**

- 2"–12": 285 PSIG
- RF/FF flanged connection
- Bolted cover

**CRN**



**SSI Class 300 Carbon Steel Basket Strainer**

**150B Series**

- ½"–2": 740 PSIG
- NPT or socket weld
- Bolted cover

**CRN**



**STAINLESS STEEL STRAINERS**

**SSI Class 150 Stainless Steel Y-Strainer**

**150Y Series**

- ½"–12": 275 PSIG
- RF/FF flanged
- Bolted cover

**CRN**



**SSI Class 300 Stainless Steel Y-Strainer**

**300Y Series**

- ½"–3": 720 PSIG
- RF flanged, NPT or socket weld
- Bolted cover

**CRN**



**SSI Class 600 Stainless Steel Y-Strainer**

**600Y Series**

- ½"–12": 1480 PSIG
- RF flanged, NPT or socket weld
- Bolted cover

**CRN**



**SSI Class 1500 Stainless Steel Y-Strainer**

**1500Y Series**

- ½"–3": 720 PSIG
- NPT or socket weld ends
- Threaded cover

**CRN**



**SSI Class 150 Stainless Steel Basket Strainer**

**150B Series**

- ½"–3": 720 PSIG
- NPT or socket weld ends
- Bolted cover

**CRN**



**SSI Class 300 Stainless Steel Basket Strainer**

**300B Series**

- ½"–2": 720 PSIG
- NPT or socket weld ends
- Threaded cover

**CRN**





## Press System



A complete system of precision engineered copper and copper alloy valves, fittings, tools, jaws and chains. The press-to-connect method is quick and reliable, assuring a clean, permanent, watertight seal. The press system joins with seamless copper water tube in residential and commercial potable, hot, chilled and process water applications for plumbing and HVAC systems. You're always guaranteed of superior quality, service expertise and the NIBCO warranty. Ask us how to spec the system, or get catalogues and submittals. Experience the Connection®.

- ASTM B75 Alloy C12200 Copper
- Third party certified to UPC
- Third party certified to the performance requirements of CSA
- MSE 13 and PS-117
- Third party certified to: IAPMO PS 117, Copper, Copper Alloy, Carbon Steel, and Stainless Steel Piping System with Press-Type and Nail-Type Connections ICC-ES LC1002, Press-Connection Fittings for Potable Water Tube and Radiant Heating Systems 1/2" to 2" ASME B16.51, Copper and Copper Alloy Press-Connect Pressure Fittings NSF/ANSI 61, Drinking Water Systems Components—Health Effects NSF/ANSI 372, Drinking Water Systems Components—Lead Free



### NIBCO Copper Adapter

**PC603**

- 1/2"–4": 200 PSI CWP
- P x F



### NIBCO Copper Adapter

**PC604**

- 1/2"x2/8"–4": 200 PSI CWP
- P x M



### NIBCO Adapter

**PC604-P**

- Size: 1/2"–4"
- PEX x P



### NIBCO Copper Cap

**PC617**

- 1/2"–4": 200 PSI CWP
- P x P



### NIBCO Copper Coupling

**PC600-DS**

- 1/2"–4": 200 PSI CWP
- P x P



### NIBCO Copper Coupling

**PC600-RS**

- Size: 1/2"–4"
- P x P



### NIBCO Copper Reducing Coupling

**PC600-R**

- 1/2"–4": 200 PSI CWP
- P x P



### NIBCO Copper Repair Coupling

**PC601 (No Stop)**

- 1/2"–4": 200 PSI CWP
- P x P



### NIBCO Copper Crossover Coupling

**PC636**

- 1/2"–3/4": 200 PSI CWP
- P x P



### NIBCO Copper 45° Elbow

**PC606**

- 1/2"–4": 200 PSI CWP
- P x P



**NIBCO Copper 45° Elbow**  
**PC606-2**  
 • ½"–4": 200 PSI CWP  
 • Ftg x P



**NIBCO Copper 90° Elbow**  
**PC607**  
 • ½"–4": 200 PSI CWP  
 • P x P



**NIBCO Copper 90° Elbow**  
**PC607-2**  
 • ½"–4": 200 PSI CWP  
 • FP x P



**NIBCO Copper 90° Elbow**  
**PC607-3**  
 • ½"–2": 200 PSI CWP  
 • P x F



**NIBCO Copper 90° Elbow**  
**PC607-4**  
 • ½"–2": 200 PSI CWP  
 • P x M



**NIBCO Bronze 90° Elbow**  
**PC707-3**  
 • ½"–¾": 200 PSI CWP  
 • P x F



**NIBCO Bronze 90° Elbow**  
**PC707-4**  
 • ½"–¾": 200 PSI CWP  
 • P x F



**NIBCO Copper Reducer**  
**PC600-2**  
 • ½"–4": 200 PSI CWP  
 • Ftg x P



**NIBCO Copper Companion Flange**  
**PC641**  
 • 2½"–4": 200 PSI CWP  
 • P x Flange



**NIBCO Copper Companion Flange**  
**PC741**  
 • 1"–2": 200 PSI CWP  
 • P x Flange



**NIBCO Copper Outlet Manifold**  
**PC695**  
 • ½"–4": 200 PSI CWP  
 • P x Ftg x P



**NIBCO Copper Tee**  
**PC611**  
 • ½"–4": 200 PSI CWP  
 • P x P x F



**NIBCO Copper/Bronze Tee**  
**PC612/PC712**  
 • ½"–4": 200 PSI CWP  
 • P x P x F



**NIBCO Copper Union**  
**PC733**  
 • Size: ½"–4"  
 • P x P



**NIBCO Copper Union**  
**PC733-3**  
 • Size: ½"–4"  
 • P x F



**NIBCO Copper Union**  
**PC733-4**  
 • ¼"–2½": 200 PSI CWP  
 • P x M



**NIBCO Brass Ball Valve**  
PFFP-600

- ½"–2": 600 PSI CWP
- 2-Piece body
- Full port
- Standard lever



**NIBCO Lead Free Brass Ball Valve**

- PC / FP600A-LF
- ½"–4": 200 PSI CWP
  - Press x Press
  - Full port



**NIBCO Bronze Ball Valve**

- PC / 585-70
- ½"–2": 600 PSI CWP
  - 2-Piece body
  - Full port



**NIBCO Bronze Ball Valve**  
PC / 585-70-66

- ½"–2": 600 PSI CWP
- 2-Piece body
- Full port
- Stainless steel trim



**NIBCO Bronze Ball Valve**  
PC585-70-LL

- Size: ½"–2": 600 PSI CWP
- 2-Piece body
- Full port



**NIBCO Bronze Ball Valve**  
PC585-70-LL

- ½"–¾": 600 PSI CWP
- 2-Piece body
- Full port
- Hose cap



**NIBCO Lead Free Bronze Ball Valve**

- PC585-80-LF
- ½"–2": 250 PSI CWP
  - 2-Piece body
  - Full port



**NIBCO Bronze Ball Valve**  
PF / PC585-70-NS

- ½"–2": 600 PSI CWP
- 2-Piece body
- Full port
- NIB-Seal handle



**NIBCO Bronze Gate Valve**  
PF111

- ½"–2": 200 PSI CWP
- Rising stem
- Metal wedge



**NIBCO Bronze Gate Valve**  
PF113

- ½"–2": 200 PSI CWP
- Non-Rising stem
- Metal wedge



**NIBCO Bronze Globe Valve**

- PF211-Y
- ½"–2": 200 PSI CWP
  - PTFE resilient seat



**NIBCO Bronze Angle Valve**  
PF311-Y

- ½"–2": 200 PSI CWP
- PTFE resilient seat



**NIBCO Lead Free Bronze Swing Check Valve**  
**PC413Y-LF**  
 • ½"-2": 200 PSI CWP



**NIBCO Bronze Swing Check Valve**  
**PF413-Y**  
 • ½"-2": 200 PSI CWP  
 • PTFE seat



**NIBCO Bronze Lift Check Valve**  
**PF480-Y**  
 • ½"-2": 200 PSI CWP  
 • PTFE seat



**NIBCO D.I. Lug Style Butterfly Valve**  
**PFD2000**  
 • 2½"-4": 200 PSI  
 • EPDM liner and metal disc



**NIBCO Bronze Y-Strainer**  
**PF221/222-A**  
 • ½"-2": 200 PSI CWP  
 • Stainless steel screen



**NIBCO Bronze Y-Strainer**  
**PF221/222-B**  
 • ½"-2": 200 PSI CWP  
 • Stainless steel screen



**NIBCO Pressing Tool**  
**PC-280**  
 • ½"-4"



**NIBCO Mini Pressing Tool**  
**PC-200M**  
 • ½"-2"



**NIBCO Pressing Jaws**  
**PC-10S through PC-15S**  
 • ½"-2"



**NIBCO Pressing Chains & Chain Adapter Jaw**  
**PC-(2/3/4), PC-5**  
 • 2½"-4"



**NIBCO Mini Pressing Jaws**  
**PC-1M, PC-2M, PC-3M**  
 • ½", ¾", 1"



**NIBCO Lithium Ion Batteries & Chargers**  
**PC-4ML/PC-8L / PC-7L/PC-9L**  
 • Use with PC-280 or PC-200M



## Copper Fittings



NCI Copper pressure fittings are used both in residential and commercial systems such as potable water and fire sprinkler applications. NIBCO metal fittings are made from the highest quality raw materials.

- Wrot fittings are made from commercially pure copper mill products per ASTM B75 Alloy C12200 and conform to material and workmanship per ASME B16.22 and MSS SP-104
- Cast fittings are made per ASTM B584 Alloy C84400 and conform to material and workmanship per ASME B16.18 and B16.24 for flanges
- Third-party certified to NSF/ANSI 61 and 372
- NFPA 99 Health Care Facilities Gas and Vacuum Systems and the Compressed Gas Association, Pamphlet G4.1 (medical gas), UL 207 Recognized to 700 PSI (select diameters)



**NCI Copper Reducing Coupling**  
N600-R

- 1/8"–8"
- C x C



**NCI Copper Fitting Reducer**  
N600-2

- 1/4"–8"
- Fig x C



**NCI Copper Coupling with Rolled Tube Stop**  
N600-RS

- 1/8"–4"
- C x C



**NCI Copper Coupling with Dimpled Tube Stop**  
N600-DS

- 3/16"–8"
- C x C



**NCI Copper Coupling without Stop**  
N601 / N701

- 1/4"–8"
- C x C



**NCI Copper 45° Elbow**  
N606

- 1/8"–8"
- C x C



**NCI Copper 45° Street Elbow**  
N606-2

- 1/4"–2"
- Fig x C



**NCI Copper 90° Elbow Intermediate Radius**  
N607-I

- 1/2"–1"
- C x C



**NCI Copper 90° Street Elbow Intermediate Radius**  
N607-2-I

- 1/2"–1"
- Fig x C



**NCI Copper 90° Elbow Long Radius**  
N607-LT

- 3/16"–4"
- C x C



**NCI Copper 90° Elbow Long Radius**  
**N607-2-LT**  
 • 1/8"–4"  
 • Fig x C



**NCI Copper 90° Elbow Long Radius**  
**N607-2-2-LT**  
 • 1/4"–2"  
 • Fig x Fig



**NCI Copper Tee**  
**N611**  
 • 1/8"–8"  
 • C x C x C



**NCI Copper Reducing Tee**  
**N611-R**  
 • 1/8"–8"  
 • C x C x C



**NCI Copper Fitting Tee**  
**N611-2**  
 • 1/2"–3/4"  
 • C x Ftg x C



**NCI Copper Adapter**  
**N603**  
 • 1/4"–4"  
 • C x F



**NCI Copper Adapter**  
**N603-2**  
 • 1/2"–2"  
 • Ftg x F



**NCI Copper Adapter**  
**N604**  
 • 1/8"–4"  
 • C x M



**NCI Copper Fitting Adapter**  
**N604-2**  
 • 1/4"–1 1/2"  
 • Ftg x M



**NCI Copper Flush Bushing**  
**N618**  
 • 1/4"–2"  
 • Ftg x C



**NCI Copper Tube Cap C**  
**N617**  
 • 1/8"–4"



**NCI Copper Union**  
**N633-W**  
 • 1/4"–1"  
 • C x C



**NCI Copper / Bronze Union**  
**N733**  
 • 1/4"–3"  
 • C x C



**NCI Copper Suction Line P-Trap**  
**N698**  
 • 1/2"–2"  
 • C x C



**NCI Copper Return Bend**  
**N698**  
 • 1/8"–2"  
 • C x C



**NCI Copper Tube Strap**  
**N624**  
 • 1/8"–2"  
 • C x C

### Bronze Fittings



Design and  
manufactured  
to the following  
standards:

- Material: ASTM B584
- Dimensions:  
ASME B16.15
- Union dimensions:  
A-A-59617
- Threads: ASME B1.20.1  
and ISO 7-1



**NCI Bronze 90° Elbow**

**BR9E**

- Size: 1/8"–4"



**NCI Bronze 90° Reducing Elbow**

**BR9R**

- Size: 3/8"x1/8"–3"x2"



**NCI Bronze 90° Street Elbow**

**BR9S**

- Size: 1/8"–4"



**NCI Bronze 45° Elbow**

**BR4E**

- Size: 1/8"–4"



**NCI Bronze 45° Street Elbow**

**BR4S**

- Size: 1/8"–4"



**NCI Bronze Tee**

**BRST**

- Size: 1/8"–4"



**NCI Bronze Reducing Tee**

**BRRT**

- Size: 1/4"x1/8"–4"x2"



**NCI Bronze Cross**

**BRCS**

• Size: 1/4"-2"



**NCI Bronze Coupling**

**BRCP**

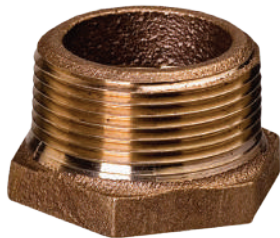
• Size: 1/8"-4"



**NCI Bronze Reducing Elbow**

**BRCP**

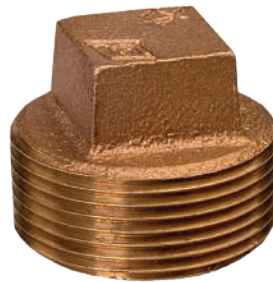
• Size: 1/4"x1/8"-4"x3"



**NCI Bronze Outside Hex Bushing**

**BRHB**

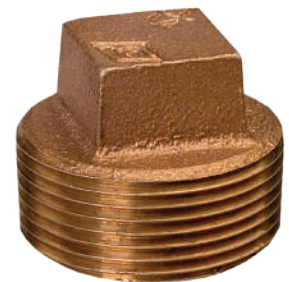
• Size: 1/4"x1/8"-4"x3"



**NCI Bronze Solid Square Head Plug**

**BRPS**

• Size: 1/8"-1"



**NCI Bronze Cored Square Head Plug**

**BRPC**

• Size: 1/8"-4"



**NCI Bronze Cap**

**BRCA**

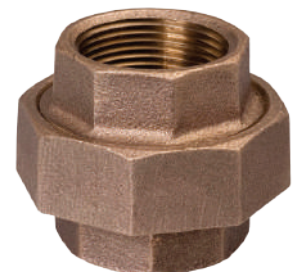
• Size: 1/8"-4"



**NCI Bronze Lock Nut**

**BRLN**

• Size: 1/4"-2"



**NCI Bronze Union**

**BRUN**

• Size: 1/8"-4"



### Brass & Steel Nipples



#### NCI Sch40 Brass Pipe Nipples

- 1/4"-2": 300 PSI
- NPT threaded to ASME B1.20.1
- Certified to CAAB1953 Lead Free



#### NCI Sch40 C.S. Pipe Nipples

- 1/8"-8": 300 PSI
- Galvanized or black finish
- NPT threaded to ASME B1.20.1



#### NCI Sch80 C.S. Pipe Nipples

- 1/8"-4": 300 PSI
- Black or galvanized finish
- NPT threaded to ASME B1.20.1



#### NCI Sch40 Brass Single Run Assortments

- 1/4"-2": 300 PSI
- NPT threaded to ASME B1.20.1
- Certified to CAAB1953 Lead Free



#### NCI Sch40 C.S. Single Run Assortments

- 1/2"-4": 300 PSI
- Black or galvanized
- NPT threaded to ASME B1.20.1



### Weld Outlets



#### Weld Outlet 61 FT: SCI

- 1/2"-4": 300 PSI
- Threaded (NPT)



#### Weld Outlet 61 CG: SCI

- 1/4"-6": 300 PSI
- Grooved



## ABS DWV Fittings



ABS Fittings for drain, waste and vent applications (non-pressure).

- ASTM D3965: The Standard Classification System and Basis for Specifications for Rigid Acrylonitrile-Butadiene-Styrene (ABS) Materials for Pipe and Fittings
- ASTM D2661: The Standard Specification for Acrylonitrile-Butadiene-Styrene (ABS) Schedule 40 Plastic Drain, Waste, and Vent and Fittings
- CSA B181.1: Acrylonitrile-Butadiene-Styrene (ABS) Drain, Waste, and Vent Pipe and Pipe Fittings



**LESSO ABS 90° Closet Elbow**  
LN329

- 4"– 3"
- Hub x Hub



**LESSO ABS 90° SR Elbow**  
LN300S / LN3005

- 1½"– 4"
- Hub x Hub



**LESSO ABS 90° Long Turn Elbow**  
LN300

- 1¼"– 6"
- Hub x Hub



**LESSO ABS 90° Street Elbow**  
LN302

- 1½"– 4"
- Hub x Spg



**LESSO ABS 90° Long Turn Street Elbow**  
LN302

- 1¼"– 4"
- Hub x Spg



**LESSO ABS 90° Long Sweep Elbow**  
LN304

- 1½"– 3"
- Hub x Hub



**LESSO ABS 60° Elbow**  
LN319

- 1½"– 3"
- Hub x Hub



**LESSO ABS 45° SR Elbow**  
LN321S

- 1½"– 4"
- Hub x Hub



**LESSO ABS 45°  
Long Turn Elbow**

**LN321**

- 1¼"– 6"
- Hub x Hub



**LESSO ABS 45°  
SR Street Elbow**

**LN323S**

- 1½"– 4"
- Hub x Spg



**LESSO ABS 45°  
Long Turn Street Elbow**

**LN323**

- 1¼"– 4"
- Hub x Spg



**LESSO ABS 22½° Elbow**

**LN324**

- 1½"– 4"
- Hub x Hub



**LESSO ABS Female Adapter**

**LN101**

- 1¼"– 4"
- Hub x FIPT



**LESSO ABS Female Adapter**

**LN105**

- 1½"– 4"
- Spg x FIPT



**LESSO ABS Trap Adapter**

**LN103P**

- 1¼", 1½", 1½"x 1¼"
- Spg x SJ



**LESSO ABS Trap Adapter**

**LN104P**

- 1¼", 1½", 1½"x 1¼"
- Hub x SJ



**LESSO ABS Cleanout Adapter**

**LN105X**

- 1½"– 4"
- Spg x Cleanout



**LESSO ABS Flush Adapter**

**LN108**

- 1½"x 1½" – 1½"x ¾"
- Spg x FIPT



**LESSO ABS Male Adapter**

**LN109**

- 1½"– 4"
- Hub x MIPT



**LESSO ABS Male Adapter**

**LN111**

- 1½"
- Spg x MIPT



**LESSO ABS Sewer & Drain Adapter**  
**LN117**  
 • 3"x4"  
 • Hub x Hub



**LESSO ABS to Copper Adapter**  
**LN120**  
 • 1¼"x1½", 1½"  
 • Hub x SJ



**LESSO ABS Cap Hub**  
**LN116**  
 • 1½"- 3"  
 • Cap x Hub



**LESSO ABS P-Trap**  
**LN706X**  
 • 1½"- 4"  
 • Hub x Hub



**LESSO ABS P-Trap**  
**LN707X**  
 • 1½"- 2"  
 • Hub x Hub x Cleanout



**LESSO ABS Union P-Trap**  
**LN708P**  
 • 1¼"- 2"  
 • Hub x Hub



**LESSO ABS Union P-Trap**  
**LN708P**  
 • 1½"  
 • Hub x Hub x Cleanout



**LESSO ABS Closet Flange**  
**LN800**  
 • 4" x 3"  
 • Hub



**LESSO ABS Closet Flange with Threaded Test Plug**  
**LN800T-422**  
 • 4" x 3"  
 • Hub



**LESSO ABS Offset Adjust Closet Flange**  
**LN822**  
 • 4" x 3"  
 • Flange x Hub



**LESSO ABS Adjust Closet Flange**  
**LN810**  
 • 4"- 3"  
 • Hub



**LESSO ABS Adjust Closet Flange**  
**LN9812P**  
 • 4" x 3"  
 • Spg





**LESSO ABS Wye**  
LN600

- 1½"– 6"
- Hub x Hub x Hub



**LESSO ABS Street Wye**  
LN602

- 3"
- Spg x Hub x Hub



**LESSO ABS Double Wye**  
LN611

- 1½"– 4"
- Hub x Hub x Hub



**LESSO ABS Dishwasher Wye**  
LN601

- 1½" x 1½" x ½"
- Hub



**LESSO ABS Sanitary Tee**  
LN400

- 1¼"– 4"
- Hub x Hub x Hub



**LESSO ABS Street Sanitary Tee**  
LN404-337

- 3 x 3 x 1½"
- Spg x Hub x Hub



**LESSO ABS Double Sanitary Tee**  
LN428 / LN429

- 2 x 2 x 1½ x 1½, 3 x 3 x 1½ x 1½, 3 x 3 x 2 x 2
- Hub x Hub x Hub x Hub



**LESSO ABS Test Tee**  
LN444-X

- 1½" x 4", 4 x 3
- Hub x Hub x Cleanout



**LESSO ABS Coupling**  
LN100

- 1¼"– 6"
- Hub x Hub



**LESSO ABS Reducing Coupling**  
LN102

- 1½" x 1¼", 4" x 2", 4" x 3"
- Hub x Hub



**LESSO ABS Plug with Gasket**  
LN106R

- 1½"– 4"

## CPVP-CTS Piping System



The NIBCO CPVC-CTS Piping System is made of FlowGuard® / FlowGuard Gold® CPVC and is ideally suited for hot and cold water pressure distribution systems in residential and commercial applications.

- Maximum service temperature 180°F
- Not for use with compressed air or other gases
- ASTM
- ASTM D
- NSF U.P. Certified
- NSF/ANSI
- Size range 1/2" to 2"

FlowGuard® / FlowGuard Gold® is a registered trademark of The Lubrizol Corporation.



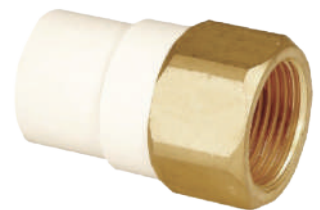
**NIBCO CPVC-CTS Coupling**  
4701  
• 1/2" – 2"  
• Slip x Slip



**NIBCO CPVC-CTS Transition Coupling**  
4701T  
• 3/4" – 2"  
• Slip x Slip



**NIBCO CPVC-CTS Female Adapter**  
4703  
• 1/2" – 1"  
• Slip x FIPT



**NIBCO CPVC-CTS Female Adapter**  
4703BT  
• 1/2" – 2"  
• CPVC Slip x Brass FIPT



**NIBCO CPVC-CTS Coupling Adapter**  
4703SW  
• 1/2"  
• Slip x NPSM



**NIBCO CPVC-CTS Male Adapter**  
4704  
• 1/2" – 2"  
• Slip x MIPT



**NIBCO CPVC-CTS Male Adapter**  
4704-BT  
• 1/2" – 2"  
• CPVC Slip x Brass MIPT



**NIBCO CPVC-CTS 45° Elbow**  
4706  
• 3/4" – 2"  
• Slip x Slip



**NIBCO CPVC-CTS  
90° Elbow**

**4707**

- ¾" – 2"
- Slip x Slip



**NIBCO CPVC-CTS  
90° Street Elbow**

**47072**

- ½" – ¾"
- SPG x Slip



**NIBCO CPVC-CTS  
90° Drop Ear Elbow**

**470735**

- ½"
- Slip x FIPT



**NIBCO CPVC-CTS 90° Union  
Drop Ear Elbow**

**4707356**

- ½"
- CPVC Slip x Bronze FIPT



**NIBCO CPVC-CTS  
90° Drop Ear Elbow**

**470735B**

- ½"
- CPVC Slip x Bronze FIPT



**NIBCO CPVC-CTS  
90° Elbow**

**47073SW**

- ½"
- Slip x NPSM



**NIBCO CPVC-CTS  
90° Drop Elbow**

**47075**

- ½"
- Slip x Slip



**NIBCO  
CPVC-CTS Tee**

**4711**

- ½" – 2"
- Slip x Slip x Slip



**NIBCO CPVC-CTS  
Cap Slip**

**4717**

- ½" – 2"
- Cap x Slip



**NIBCO CPVC-CTS  
Bushing**

**4718**

- ¾" x ½", 2" x 1½"
- Spg x Slip



**NIBCO CPVC-CTS  
Transition Bushing**

**4718**

- 1" IPS x 1" CTS, 2" IPS x 2" CTS
- Slip x Slip



**NIBCO CPVC-CTS S  
nap-On Polypropylene  
Tube Straps**

**4724**

- ½" – ¾"



**NIBCO CPVC-CTS Union**  
4733

- 1/2" – 3/4"
- CPVC Slip x Brass Solder



**NIBCO CPVC-CTS Compression Fitting**  
47322

- 1/2" – 3/4"
- SPG



**NIBCO CPVC-CTS Union**  
47333

- 1/2" – 2"
- Slip x Brass FIPT



**NIBCO CPVC-CTS Union CPVC**  
47334

- 1/2" – 3/4", 1/2" x 3/8" OD
- Slip x Copper MIPT



**NIBCO CPVC-CTS Union Compression**  
47337

- 1/2" – 3/4", 1/2" x 3/8" OD
- CPVC Slip x Brass



**NIBCO CPVC-CTS Ball Valve**  
4770

- 1/2" – 3/4"
- SOC x SOC



**NIBCO CPVC-CTS Plastic Clamp Pipe Hanger**  
627

- 1/2" – 2", 1/2" – 3/4"



**NIBCO CPVC-CTS Double Plastic Clamp Hanger**  
629

- 1/2" – 3/4"



**NIBCO CPVC-CTS Pipe**  
4700N

- 1" x 10" – 3/4" x 10"
- SDR CSA / ULC



### PVC Sch40 Fittings



**Design and manufactured to the following standards:**

- NSF/ANSI 61 Drinking water system components-health effects
- NSF/ANSI 14 Plastics piping system components and related materials
- ASTM D 1784 Standard specification for rigid poly (vinyl chloride) (PVC) compounds
- ASTM D 2466 Standard Specification for Rigid Poly (Vinyl Chloride) (PVC) Plastic Pipe Fitting, Schedule 40
- CSA B137.3 Rigid polyvinylchloride (PVC) pipe and fittings for pressure applications



**LESSO PVC Sch40 Tee**  
**401**

- Size: 3/8"– 8"
- SOC x SOC x SOC



**LESSO PVC Sch40 Reducing Tee**  
**401**

- Size: 3/8"x3/8"x1/2"–10"x10"x6"
- SOC x SOC x SOC



**LESSO PVC Sch40 Tee**  
**402**

- Size: 1/2"–4"
- SOC x SOC x FIPT



**LESSO PVC Sch40 Reducing Tee**  
**402**

- Size: 1/2"x1/2"x1/8"–6"x6"x4"
- SOC x SOC x FIPT



**LESSO PVC Sch40 Tee**  
**405**

- Size: 3/8"–2"
- FIPT x FIPT x FIPT



**LESSO PVC Sch40 90° Elbow**  
**406**

- Size: 3/8"–8"
- SOC x SOC



**LESSO PVC Sch40 90° Reducing Elbow**  
**406**

- Size: 1"x1/2"–2"x1 1/2"
- SOC x SOC



**LESSO PVC Sch40 90° Elbow**  
**407**

- Size: 1/2"–4"
- SOC x FIPT



**LESSO PVC Sch40  
90° Reducing Elbow**

- 407**  
 • Size: 3/8"x1/2"-1 1/2"x1"  
 • SOC x FIPT



**LESSO PVC Sch40  
90° Elbow**

- 408**  
 • Size: 1/2"-2"  
 • FIPT x FIPT



**LESSO PVC Sch40  
90° Street Elbow**

- 409**  
 • Size: 1/2"-6"  
 • SPIG x SOC



**LESSO PVC Sch40  
90° Street Elbow**

- 410**  
 • Size: 1/2"-2"  
 • SOC x MIPT



**LESSO PVC Sch40  
90° Reducing Street Elbow**

- 410**  
 • Size: 3/4"x1/2"-3/4"x1"  
 • SOC x MIPT



**LESSO PVC Sch40  
90° Street Elbow**

- 412**  
 • Size: 1/2"-2"  
 • MIPT x FIPT



**LESSO PVC Sch40  
90° Elbow Side Outlet**

- 413**  
 • Size: 1/2"-2"  
 • SOC x SOC x SOC



**LESSO PVC Sch40  
90° Elbow Side Outlet**

- 414**  
 • Size: 1/2"-1"x1"x1/2"  
 • SOC x SOC x FIPT



**LESSO PVC  
Sch40 45° Elbow**

- 417**  
 • Size: 1/2"-10"  
 • SOC x SOC



**LESSO PVC  
Sch40 Cross**

- 420**  
 • Size: 1/2"-6"  
 • SOC x SOC x SOC x SOC



**LESSO PVC Sch40  
45° Street Elbow**

- 427**  
 • Size: 1"-2"  
 • SPIG x SOC



**NCI PVC Sch40 Coupling**

- 429**  
 • Size: 3/8"-12"  
 • SOC x SOC



**LESSO PVC Sch40 Reducing Coupling**

429

- Size: 3/4"x1/2"-12"x10"
- SOC x SOC



**LESSO PVC Sch40 Coupling**

430

- Size: 1/2"-2"
- FIPT x FIPT



**LESSO PVC Sch40 Reducing Coupling**

430

- Size: 3/4"x1/2"-1"x3/4"
- FIPT x FIPT



**LESSO PVC Sch40 Female Adapter**

435

- Size: 3/8"-6"
- SOC x FIPT



**LESSO PVC Sch40 Reducing Female Adapter**

435

- Size: 1/4"x1/4"-1 1/4"x1"
- SOC x FIPT



**LESSO PVC Sch40 Reducing Male Adapter**

436

- Size: 3/8"-6"
- SOC x MIPT



**LESSO PVC Sch40 Reducing Male Adapter**

436

- Size: 1/2"x3/8"-3"x4"
- SOC x MIPT



**LESSO PVC Sch40 Flush Style Reducing Bushing**

437

- Size: 1/2"x1/4"-10"x8"
- SPIG x SOC



**LESSO PVC Sch40 Flush Style Reducing Bushing**

438

- Size: 3/8"x1/4"-6"x4"
- SPIG x FIPT



**LESSO PVC Sch40 Flush Style Reducing T.T. Bushing**

439

- Size: 3/8"x1/4"-4"x3"
- MIPT x FIPT



**LESSO PVC Sch40 Cap**

447

- Size: 3/8"-12"
- SOC



**LESSO PVC Sch40 Cap**

448

- Size: 3/8"-6"
- FIPT



**LESSO PVC Sch40 Plug**

449

- Size: 3/8"–6"
- SPIG



**LESSO PVC Sch40 Plug**

450

- Size: 3/8"–6"
- MIPT



**LESSO PVC Sch40 Snap-On Saddle**

464

- Size: 3/4"–1"x3/4"
- IPS O.D. x FIPT



**LESSO PVC Sch40 Insert Adapter**

474

- Size: 3/4"–2"
- INSERT x SOC



**LESSO PVC Sch40 WYE**

475

- Size: 1/2"–6"
- SOC x SOC X SOC



**LESSO PVC Sch40 Reducing WYE**

475

- Size: 3/4"x3/4"x3/4"–6"x6"x4"
- SOC x SOC X SOC



**LESSO PVC Sch40 SPIGOT Female Adapter**

478

- Size: 1/2"–2"
- SPIG x FIPT



**LESSO PVC Sch40 Deep Socket Coupling**

479

- Size: 1/2"–6"
- SOC x SOC



**LESSO PVC Sch40 Union W/O-Ring Seal**

497

- Size: 1/2"–2"
- SOC x SOC



**LESSO PVC Sch40 Union W/O-Ring Seal**

498

- Size: 1/2"–2"
- FIPT x FIPT



### PVC Sch80 Fittings



#### Design and manufactured to the following standards:

- NSF/ANSI 61 Drinking water system components-health effects
- NSF/ANSI 14 Plastics piping system components and related materials
- ASTM D 1784 Standard specification for rigid poly (vinyl chloride) (PVC) compounds
- ASTM D 2467 Standard Specification for Rigid Poly (Vinyl Chloride) (PVC) Plastic Pipe Fitting, Schedule 80
- ASTM F 1970 Standard Specifications for Special Engineered Fittings, Appurtenances or Valves for use in Poly (Vinyl Chloride) (PVC)
- CSA B137.3 Rigid polyvinylchloride (PVC) pipe and fittings for pressure applications



**LESSO PVC Sch80 Tee**  
801 Series  
• Size: 1/4"-8"  
• SOC x SOC x SOC



**LESSO PVC Sch80 Reducing Tee**  
801 Series  
• Size: 3/4"x3/4"x1/2"-8"x8"x4"  
• SOC x SOC x SOC



**LESSO PVC Sch80 Tee**  
802 Series  
• Size: 1/2"-2"  
• SOC x SOC x FIPT



**LESSO PVC Sch80 Reducing Tee**  
802 Series  
• Size: 2"x2"x1"-1/2"  
• SOC x SOC x FIPT



**LESSO PVC Sch80 Tee**  
805 Series  
• Size: 1/4"-4"  
• FIPT x FIPT x FIPT



**LESSO PVC Sch80 90° Elbow**  
806 Series  
• Size: 1/4"-8"  
• FIPT x FIPT



**LESSO PVC Sch80 90° Elbow**  
807 Series  
• Size: 1/2"-2"  
• SOC x FIPT



**LESSO PVC Sch80 90° Elbow**  
808 Series  
• Size: 1/4"-4"  
• FIPT x FIPT



**LESSO PVC Sch80  
45° Elbow**

- 817**  
 • Size: 1/4"–6"  
 • SOC x SOC



**LESSO PVC Sch80  
45° Elbow**

- 819**  
 • Size: 1/2"–4"  
 • FIPT x FIPT



**LESSO PVC Sch80  
Coupling**

- 829**  
 • Size: 1/4"–12"  
 • SOC x SOC



**LESSO PVC Sch80  
Reducing Coupling**

- 829**  
 • Size: 3/4"x1/2"–8"x6"  
 • SOC x SOC



**LESSO PVC  
Sch80 Coupling**

- 830**  
 • Size: 1/4"–4"  
 • FIPT x FIPT



**LESSO PVC Sch80  
Female Adapter**

- 835**  
 • Size: 1/4"–4"  
 • SOC x FIPT



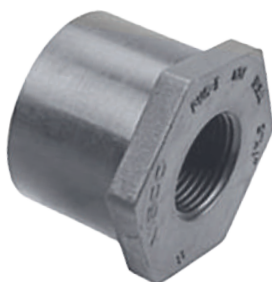
**LESSO PVC Sch80  
Male Adapter**

- 836**  
 • Size: 1/2"–4"  
 • SOC x MIPT



**LESSO PVC Sch80  
Reducing Bushing**

- 837**  
 • Size: 3/8"x1/4"–6"x4"  
 • SPIG x SOC



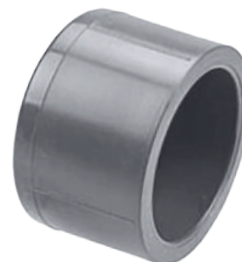
**LESSO PVC Sch80  
Reducing Bushing**

- 838**  
 • Size: 3/8"x1/4"–6"x4"  
 • SPIG x FIPT



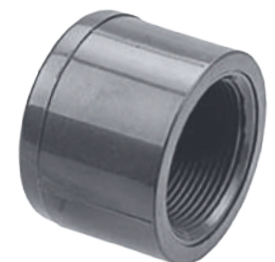
**LESSO PVC Sch80  
Reducing Bushing**

- 839**  
 • Size: 1/2"x1/4"–2 1/2"x2"  
 • MIPT x FIPT



**LESSO PVC  
Sch80 Cap**

- 847**  
 • Size: 1/4"–8"  
 • SOC



**LESSO PVC  
Sch80 Cap**

- 848**  
 • Size: 1/4"–4"  
 • FIPT



**LESSO PVC Sch80 Plug**  
**849**

- Size: 1"-2"
- SPIG



**LESSO PVC Sch80 Plug**  
**850**

- Size: 1/4"-4"
- MIPT



**LESSO PVC Sch80 Flange 1-Piece**  
**851**

- Size: 2 1/2"-3"
- SOC



**LESSO PVC Sch80 Flange**  
**852**

- Size: 1/2"-1 1/4"
- FIPT



**LESSO PVC Sch80 Blind Flange**  
**853**

- Size: 2 1/2"-3"
- Flange



**LESSO PVC Sch80 Union W/O-Ring Seal**  
**897**

- Size: 1/4"-3"
- SOC x SOC



**LESSO PVC Sch80 Union W/O-Ring Seal**  
**898**

- Size: 1/2"-1 1/2"
- FIPT x FIPT



**LESSO PVC Sch80 Union W/O-Ring Seal**  
**899**

- Size: 1/2"-2"
- SOC x FIPT



**Flexible Pipe Cap**  
 TC15 to TC4  
 • Size: 1½"-6"



**Flexible Coupling**  
 FC56  
 • Size: 1¼"-10"



**Flexible Coupling**  
 FC56  
 • Size: 1"



**Flexible Flexible Elbow**  
 FQL150  
 • Size: 1½"x1¼" – 10"x8"



**Flexible Tee**  
 FQT150  
 • Size: 1½"-4"



**No Hub Coupling**  
 NHC  
 • Size: 1½"-4"



**Shielded Coupling Connects**  
 C.I., Plastic, Steel to Plastic,  
 Steel or XHC/Copper  
 PC00/PC01  
 • Size: 1½"-8"



**Flange Repair Kit**  
 SF100/SF125



**Flexible J-Bend**  
 FT150  
 • Size: 1¼"-1½"



**Drain and Trap Connector**  
 FC56  
 • Size: 1½"x1½" – 1½"x1¼"



**Tubular Drain Connector**  
 TC150  
 • Size: 1"



**Dishwasher Drain Connector**  
 DWC100  
 • Size: 1½"x1¼" – 10"x8"





### IMCO Pipe Insulation

114DT – 114ET

118CT – 118CU

12BT – 12CT - 12ET

138BT– 138CT - 114ET

## Terms

**BLV** - Ball Valve

**BFV** - Butterfly Valve

**BRZ.** - Bronze

**B.W.** - Butt-Weld

**°C** - Degree Celsius

**C.I.** - Cast Iron (Gray Iron)

**C.S.** - Carbon Steel

**CWP** - Cold Working  
Pressure

**D.I.** - Ductile Iron

**°F** - Degree Fahrenheit

**FF. FLG.** - Flat Face  
Flange

**N.R.S.** - Non-Rising Stem

**OS&Y** - Outside Screw &  
Yoke

**PSI** - Pounds Per  
Square Inch

**RF. FLG.** - Raised Face  
Flange

**SB** - Screw-in Bonnet

**Spec.** - Specification

**S.S.** - Stainless Steel

**STD** - Standard

**S.W.** - Socket-weld

**Temp.** - Temperature

**Thrd** - Threaded

**WOG** - Water-Oil-Gas  
Service

**WWP** - Water Working  
Pressure

## Standards

**ANSI** - American National Standards Institute

**ASME** - American Society of Mechanical  
Engineering

**ASTM** - American Society for Testing Material

**AWWA** - American Water Works Association

**CSA** - Canadian Standards Association

**FM** - Factory Mutual Fire Insurance Companies

**MSS** - Manufacturers Standardization Society  
of the Valve and Fittings Industry

**NFPA** - National Fire Protection Association

**NSF** - National Sanitation Foundation, NSF/ANSI  
61 Standard 61 for Potable Water Service

**UL** - Underwriters' Laboratories Inc.

**ULC** - Underwriters' Laboratories of Canada

**UPC** - Unified Plumbing Code by IAPMO



# Quality Products by NCI Canada Inc.

## Fire Protection Valves

- FP. Brass and Bronze Ball Valves
- FP. Bronze Gate, Globe and Check valves
- FP. Iron Gate Valves and Indicator Posts
- FP. Resilient Seat Gate Valves
- FP. Butterfly Valves
- FP. Check valves



## Metal Fittings

- Grooved Couplings and Fittings
- Press System
- H.P. Copper Fittings for ACR applications
- Schedule 40, 80 and XXH Seamless Steel Nipples
- Schedule 40 Welded Steel Nipples
- Bronze Fittings and Brass Nipples
- Weld Outlets



## Commercial and Industrial Valves

- Brass and Bronze Ball Valves
- Bronze Gate, Globe and Check Valves
- Cast Iron Gate, Globe and Check valves
- Commercial Butterfly Valves
- Gas Ball Valves
- Carbon Steel and Stainless Steel Ball Valves
- Carbon Steel and Stainless Steel Gate, Globe and Check Valves
- Double Door and Silent Check valves
- Y-Strainers and Basket Strainers



## Plastic Pipe, Valves and Fittings

- ABS Fittings
- PVC Schedule 40 & 80 Valves and Fittings
- CPVC-CTS Pipe and Fittings
- CPVC Schedule 80 Valves and Fittings
- PP Schedule 80 Pipe, Valves and Fittings
- PVDF Schedule 80 Pipe, Valves and Fittings
- Flexible Couplings and Connectors
- PVC & Nylon Insert Fittings



NCI Canada is an authorized distributor of the following premium brands:

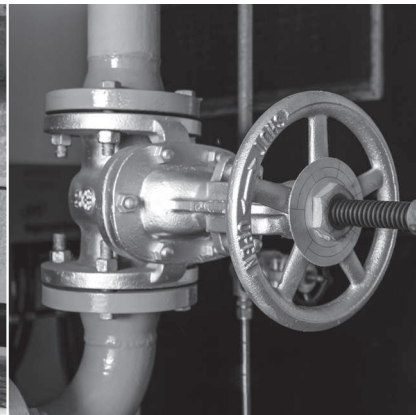
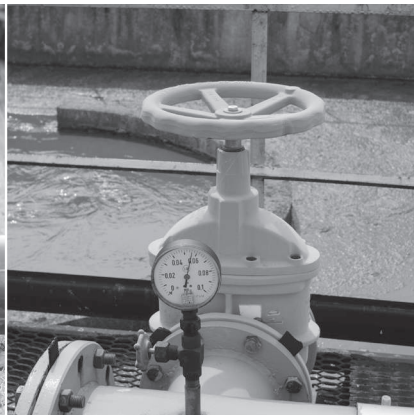
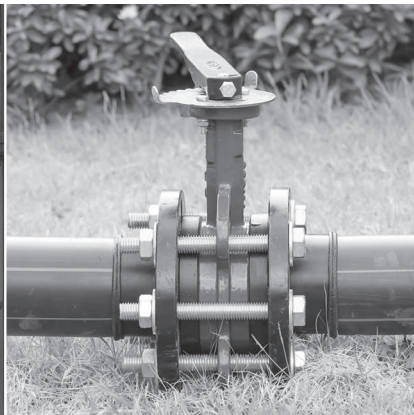
**NIBCO**  
AHEAD OF THE FLOW™

SMITH-COOPER  
INTERNATIONAL

**Flow+**

**Chemtrol**  
a brand of NIBCO

**LESSO**®



For more information, visit us at [NCICanada.com](http://NCICanada.com)

**NCI**  
NCI CANADA INC.

Central Region  
Headquarters

2305 Wyecroft Road  
Oakville, Ontario Canada L6L 6R2

Western Region  
Office & Warehouse

7136-56 Avenue NW  
Edmonton, Alberta T6B 1E4

Local: (905) 727-5545  
Toll-Free: (800) 268-3509  
Fax: (905) 727-4088  
Email: [sales@ncicanada.com](mailto:sales@ncicanada.com)